


<b>1126</b>	<b>POLES, HARDWARE, AND FRAMING</b>	
Sheet 1 of 1	<b>3PH VERTICAL FRAMING</b>	
Rev: 08/01/20		

**1126**

## **3 PH VERTICAL FRAMING**

### **CONTAINS**

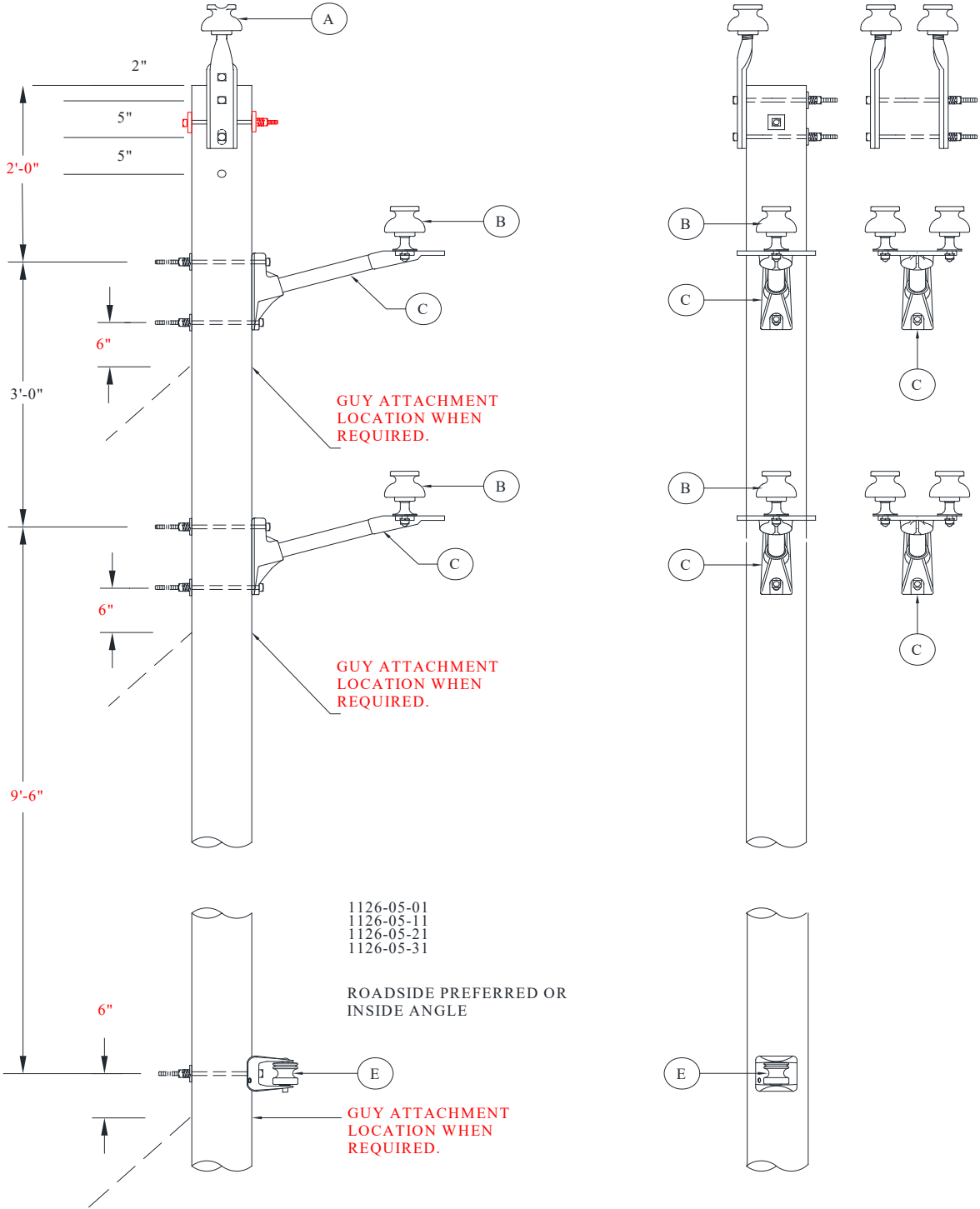
- 1126-05 3PH - VERTICAL TANGENT/ANGLE**
- 1126-07 3PH - VERTICAL TANGENT/ANGLE W/APPARATUS**
- 1126-21 3PH - VERTICAL DEAD END**
- 1126-42 3PH - VERTICAL DE/REDUCED TENSION**
- 1126-51 3PH - VERTICAL DBL DE ANGLE**
- 1126-55 3PH - VERTICAL DEAD END CORNER**
- 1126-60 3PH - VERTICAL TAN W/FT-RT JUNCTION**


<b>1126-05</b>
Sheet 1 of 4
Rev: 08/01/20

**POLES, HARDWARE, AND FRAMING**

**3PH VERTICAL CONSTRUCTION**

**3PH VERTICAL TANGENT/ANGLE**



<b>1126-05</b>	<b>POLES, HARDWARE, AND FRAMING</b> <b>3PH VERTICAL CONSTRUCTION</b> <b>3PH VERTICAL TANGENT/ANGLE</b>	
Sheet 2 of 4		
Rev: 08/01/20		

**MU**

**REFERENCE FOR SPAN LENGTH/ANGLE PARAMETERS**

CU-REF	WIRE	PARAMETERS
1126-05-01	1/0	SPAN LENGTH < 300 FT
	4/0	SPAN LENGTH < 250 FT
	795	SPAN LENGTH < 250 FT
1126-05-11	1/0	SPAN LENGTH > 300 FT
	4/0	SPAN LENGTH > 250 FT
	795	SPAN LENGTH > 250 FT
1126-05-21	1/0	ANGLE POLE < 30 DEGREES WITH SPAN LENGTH < 300 FT.
	4/0	ANGLE POLE < 09 DEGREES WITH SPAN LENGTH < 250 FT.
	795	ANGLE POLE < 09 DEGREES WITH SPAN LENGTH < 250 FT.
1126-05-31	1/0	ANGLE POLE < 30 DEGREES WITH SPAN LENGTH > 300 FT.
	4/0	ANGLE POLE > 09 AND < 18DEGREES.
	795	ANGLE POLE > 09 AND < 18DEGREES.

**MU-ID**

**MU-REF**

**MU-DESCRIPTION**

3PHVERTTANGLPNSGLNU      11260501      3PH VERTICAL TANGENT W/SGL PIN SGL NEUT

ID	CU-REF	CU-DESC	QTY	MU-REF
A	11200701	INSULATOR W/FIBERGLASS POLE TOP PIN-SGL	1	11260501
B	11200801	INSULATOR W/SHORT SHANK PIN	2	11260501
C	11201101	BRKT 3 EAR FG 18 IN-SGL	2	11260501
D	11201003	BRKT RACK 1 POINT 14 IN-SGL	1	11260501

3PHVERTTANDBLPNSGLNU      11260511      3PH VERTICAL TANGENT W/DBL PIN SGL NEUT


ID	CU-REF	CU-DESC	QTY	MU-REF
A	11200702	INSULATOR W/FIBERGLASS POLE TOP PIN-DBL	1	11260511
B	11200801	INSULATOR W/SHORT SHANK PIN	4	11260511
C	11201101	BRKT 3 EAR FG 18 IN-SGL	2	11260511
D	11201003	BRKT RACK 1 POINT 14 IN-SGL	1	11260511

3PHVERTANGSGLPNSGLNU      11260521      3PH VERTICAL ANGLE W/SGL PIN SGL NEUT

ID	CU-REF	CU-DESC	QTY	MU-REF
A	11200703	INSULATOR W/FIBERGLASS POLE TOP PIN SGL- ANGLE	1	11260521
B	11200801	INSULATOR W/SHORT SHANK PIN	2	11260521
C	11201101	BRKT 3 EAR FG 18 IN-SGL	2	11260521
D	11201003	BRKT RACK 1 POINT 14 IN-SGL	1	11260521

3PHVERTANGDBLPNSGLNU      11260531      3PH VERTICAL ANGLE W/DBL PIN SGL NEUT

ID	CU-REF	CU-DESC	QTY	MU-REF
A	11200704	INSULATOR W/FIBERGLASS POLE TOP PIN DBL- ANGLE	1	11260531
B	11200801	INSULATOR W/SHORT SHANK PIN	4	11260531

<b>1126-05</b>	<b>POLES, HARDWARE, AND FRAMING</b> <b>3PH VERTICAL CONSTRUCTION</b> <b>3PH VERTICAL TANGENT/ANGLE</b>	
Sheet 3 of 4		
Rev: 08/01/20		

ID	CU-REF	CU-DESC	QTY	MU-REF
C	11201101	BRKT 3 EAR FG 18 IN-SGL	2	11260531
D	11201003	BRKT RACK 1 POINT 14 IN-SGL	1	11260531

**NOTE ADD MODULE 11201003 WHEN SECOND BRACKET IS REQUIRED FOR SECONDARY SERVICE**

**ASSOCIATED MODULES**

	CU-REF	CU-DESCRIPTION	QTY	MU-REF
1/0-1/0 TANGENT	1240-04-03	TIES PREFM SGL 1/0	3	1126-05-01
	1240-05-40	TIES PREFM SIDE 1/0 NEUTRAL	1	1126-05-01
	1119-10-01	GRD WOOD POLE W/BUTT COIL #6-1/0N	1	1126-05-01
	1240-04-23	TIES PREFM DBL 1/0	3	1126-05-11
	1240-05-40	TIES PREFM SIDE 1/0 NEUTRAL	1	1126-05-11
	1119-10-01	GRD WOOD POLE W/BUTT COIL #6-1/0N	1	1126-05-11

	CU-REF	CU-DESCRIPTION	QTY	MU-REF
1/0-1/0 ANGLE	1240-05-03	TIES PREFM SIDE SGL 1/0	3	1126-05-21
	1240-05-40	TIES PREFM SIDE 1/0 NEUTRAL	1	1126-05-21
	1119-10-01	GRD WOOD POLE W/BUTT COIL #6-1/0N	1	1126-05-21
	1163-14-10	DG TPL 3-3/8 " GW W/ROD	1	1126-05-21
	1240-05-23	TIES PREFM SIDE DBL 1/0	3	1126-05-31
	1240-05-40	TIES PREFM SIDE 1/0 NEUTRAL	1	1126-05-31
	1119-10-01	GRD WOOD POLE W/BUTT COIL #6-1/0N	1	1126-05-31
	1163-14-10	DG TPL 3-3/8 " GW W/ROD	1	1126-05-31

	CU-REF	CU-DESCRIPTION	QTY	MU-REF
4/0 -4/0 TANGENT	1240-04-06	TIES PREFM SGL 4/0	3	1126-05-01
	1240-05-50	TIES PREFM SIDE 4/0 NEUTRAL	1	1126-05-01
	1119-10-02	GRD WOOD POLE W/BUTT COIL #6-4/0N	1	1126-05-01
	1240-04-26	TIES PREFM DBL 4/0	3	1126-05-11
	1240-05-50	TIES PREFM SIDE 4/0 NEUTRAL	1	1126-05-11
	1119-10-02	GRD WOOD POLE W/BUTT COIL #6-4/0N	1	1126-05-11

<b>1126-05</b>
Sheet 4 of 4
Rev: 08/01/20

**POLES, HARDWARE, AND FRAMING**

**3PH VERTICAL CONSTRUCTION**

**3PH VERTICAL TANGENT/ANGLE**



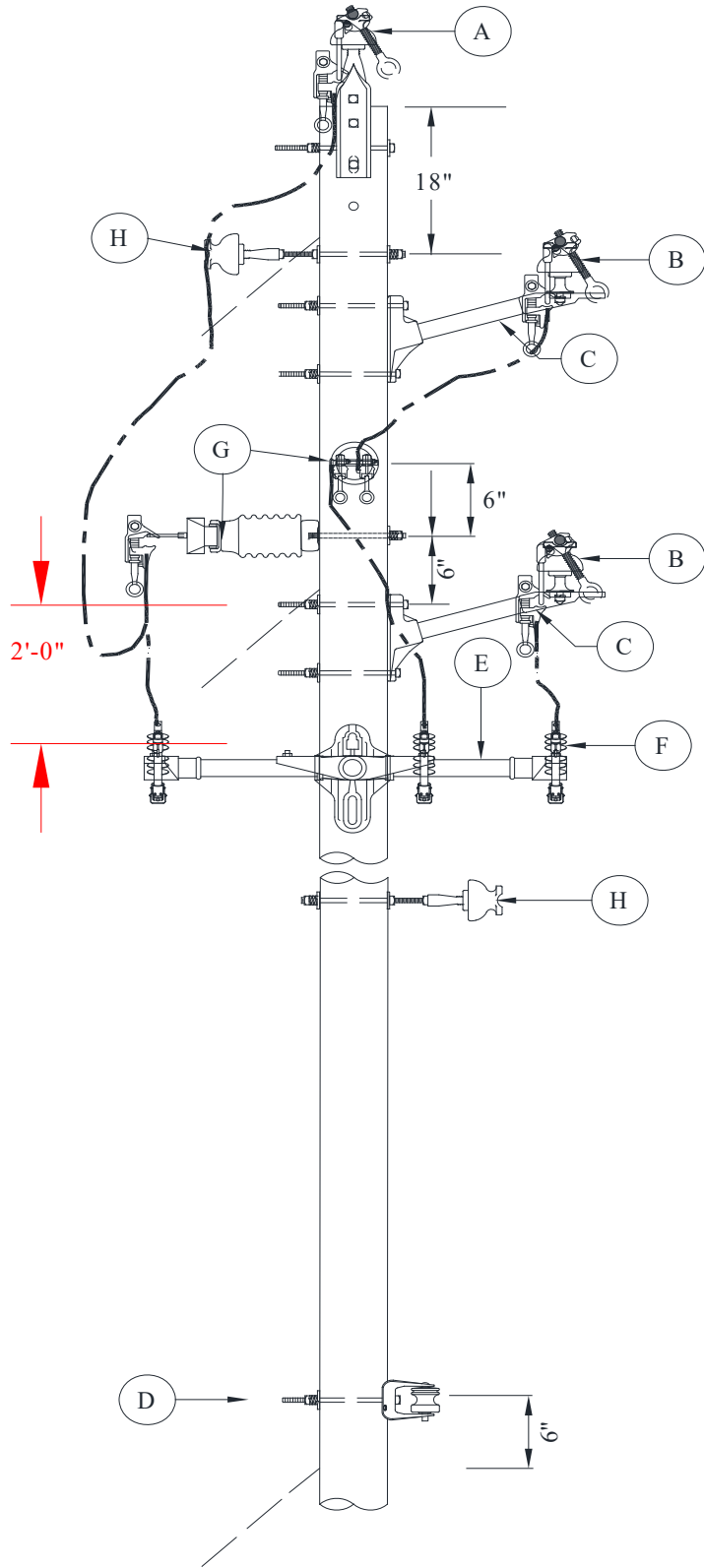
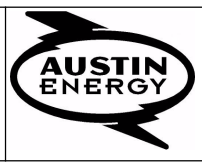
	<b>CU-REF</b>	<b>CU-DESCRIPTION</b>	<b>QTY</b>	<b>MU-REF</b>
4/0-4/0 ANGLE	1240-05-06	TIES PREFM SIDE SGL 4/0	3	1126-05-21
	1240-05-50	TIES PREFM SIDE 4/0 NEUTRAL	1	1126-05-21
	1119-10-02	GRD WOOD POLE W/BUTT COIL #6-4/0N	1	1126-05-21
	1163-14-20	DG TPL 2-7/16" W/ROD AND 1-3/8" GW	1	1126-05-21
	1240-05-26	TIES PREFM SIDE DBL 4/0	3	1126-05-31
	1240-05-50	TIES PREFM SIDE 4/0 NEUTRAL	1	1126-05-31
	1119-10-02	GRD WOOD POLE W/BUTT COIL #6-4/0N	1	1126-05-31
	1163-14-20	DG TPL 2-7/16" W/ROD AND 1-3/8" GW	1	1126-05-31

	<b>CU-REF</b>	<b>CU-DESCRIPTION</b>	<b>QTY</b>	<b>MU-REF</b>
795-4/0 TANGENT	1240-04-10	TIES PREFM SGL 795	3	1126-05-01
	1240-05-50	TIES PREFM SIDE 4/0 NEUTRAL	1	1126-05-01
	1119-10-02	GRD WOOD POLE W/BUTT COIL #6-4/0N	1	1126-05-01
	1240-04-30	TIES PREFM DBL 795	3	1126-05-21
	1240-05-50	TIES PREFM SIDE 4/0 NEUTRAL	1	1126-05-21
	1119-10-02	GRD WOOD POLE W/BUTT COIL #6-4/0N	1	1126-05-21

	<b>CU-REF</b>	<b>CU-DESCRIPTION</b>	<b>QTY</b>	<b>MU-REF</b>
795-4/0 ANGLE	1240-05-10	TIES PREFM SIDE SGL 795	3	1126-05-11
	1240-05-50	TIES PREFM SIDE 4/0 NEUTRAL	1	1126-05-11
	1119-10-02	GRD WOOD POLE W/BUTT COIL #6-4/0N	1	1126-05-11
	1163-14-20	DG TPL 2-7/16" W/ROD AND 1-3/8" GW	1	1126-05-11
	1240-05-30	TIES PREFM SIDE DBL 795	3	1126-05-31
	1240-05-50	TIES PREFM SIDE 4/0 NEUTRAL	1	1126-05-31
	1119-10-02	GRD WOOD POLE W/BUTT COIL #6-4/0N	1	1126-05-31
	1163-14-20	DG TPL 2-7/16" W/ROD AND 1-3/8" GW	1	1126-05-31

1126-07
Sheet 1 of 2
Rev: 08/01/20

**POLES, HARDWARE, AND FRAMING**  
**3PH VERTICAL CONSTRUCTION**  
**3PH VERTICAL TANGENT/ANGLE W/APPARATUS**




NOTE: PART "G"  
INCLUDES BOTH  
THE INSULATOR  
AND THE STIRRUP.

NOTE: TOP SIDE SWITCH  
USE #2 TINNED.

NOTE: IF STEEL POLE, USE  
FIBERGLASS

ROADSIDE PREFERRED  
FOR INSIDE ANGLE

<b>1126-07</b>	<b>POLES, HARDWARE, AND FRAMING</b>	
Sheet 2 of 4	<b>3PH VERTICAL CONSTRUCTION</b>	
Rev: 08/01/20	<b>3PH VERTICAL TANGENT/ANGLE W/APPARATUS</b>	

**MU**

**REFERENCE FOR SPAN LENGTH/ANGLE PARAMETERS**

CU-REF	WIRE	PARAMETERS
1126-05-01	1/0	SPAN LENGTH < 300 FT
	4/0	SPAN LENGTH < 250 FT
	795	SPAN LENGTH < 250 FT
1126-05-11	1/0	SPAN LENGTH > 300 FT
	4/0	SPAN LENGTH > 250 FT
	795	SPAN LENGTH > 250 FT
1126-05-21	1/0	ANGLE POLE < 30 DEGREES WITH SPAN LENGTH < 300 FT.
	4/0	ANGLE POLE < 09 DEGREES WITH SPAN LENGTH < 250 FT.
	795	ANGLE POLE < 09 DEGREES WITH SPAN LENGTH < 250 FT.
1126-05-31	1/0	ANGLE POLE < 30 DEGREES WITH SPAN LENGTH > 300 FT.
	4/0	ANGLE POLE > 09 AND < 18DEGREES.
	795	ANGLE POLE > 09 AND < 18DEGREES.

**MU- ID**

**MU- REF**

**MU- DESCRIPTION**


3PHVERTTAN1P1NW/APPARATUS    11260701    3PHASE TANGENT 1 PIN WITH APPARATUS

ID	CU-REF	CU-DESC	QTY	MU-REF
A	11200701	INSULATOR W/FIBERGLASS POLE TOP PIN-SGL	1	11260701
B	11200801	INSULATOR W/SHORT SHANK PIN	2	11260701
C	11201101	BRKT 3 EAR FG 18 IN-SGL	2	11260701
D	11201003	BRKT RACK 1 POINT 14 IN-SGL	1	11260701
E	13680801	BRACKET MOUNT CUTOUT/ARRESTOR 3PH	1	11260701
F	13680104	CUTOUT 15KV W/LB WITH MOUNTING BOLT	3	11260701
G	11201901	STIRRUP INDULATOR	2	11260701
H	11200901	INSULATOR W/ADAPTOR PIN	2	11260701

**NOTE ADD MODULE 11201003 WHEN SECOND BRACKET IS REQUIRED FOR SECONDARY SERVICE**

**ASSOCIATED MODULES**

	CU-REF	CU-DESCRIPTION	QTY	MU-REF
1/0-1/0 TANGENT	1240-04-03	TIES PREFM SGL 1/0	3	1126-05-01
	1240-05-40	TIES PREFM SIDE 1/0 NEUTRAL	1	1126-05-01
	1119-10-01	GRD WOOD POLE W/BUTT COIL #6-1/0N	1	1126-05-01
	1240-04-23	TIES PREFM DBL 1/0	3	1126-05-11
	1240-05-40	TIES PREFM SIDE 1/0 NEUTRAL	1	1126-05-11
	1119-10-01	GRD WOOD POLE W/BUTT COIL #6-1/0N	1	1126-05-11

<b>1126-07</b>	<b>POLES, HARDWARE, AND FRAMING</b> <b>3PH VERTICAL CONSTRUCTION</b> <b>3PH VERTICAL TANGENT/ANGLE W/APPARATUS</b>	
Sheet 3 of 4		
Rev: 08/01/20		

	CU-REF	CU-DESCRIPTION	QTY	MU-REF
1/0-1/0 ANGLE	1240-05-03	TIES PREFM SIDE SGL 1/0	3	1126-05-21
	1240-05-40	TIES PREFM SIDE 1/0 NEUTRAL	1	1126-05-21
	1119-10-01	GRD WOOD POLE W/BUTT COIL #6-1/0N	1	1126-05-21
	1163-14-10	DG TPL 3-3/8 " GW W/ROD	1	1126-05-21
	1240-05-23	TIES PREFM SIDE DBL 1/0	3	1126-05-31
	1240-05-40	TIES PREFM SIDE 1/0 NEUTRAL	1	1126-05-31
	1119-10-01	GRD WOOD POLE W/BUTT COIL #6-1/0N	1	1126-05-31
	1163-14-10	DG TPL 3-3/8 " GW W/ROD	1	1126-05-31

	CU-REF	CU-DESCRIPTION	QTY	MU-REF
4/0 -4/0 TANGENT	1240-04-06	TIES PREFM SGL 4/0	3	1126-05-01
	1240-05-50	TIES PREFM SIDE 4/0 NEUTRAL	1	1126-05-01
	1119-10-02	GRD WOOD POLE W/BUTT COIL #6-4/0N	1	1126-05-01
	1240-04-26	TIES PREFM DBL 4/0	3	1126-05-11
	1240-05-50	TIES PREFM SIDE 4/0 NEUTRAL	1	1126-05-11
	1119-10-02	GRD WOOD POLE W/BUTT COIL #6-4/0N	1	1126-05-11

	CU-REF	CU-DESCRIPTION	QTY	MU-REF
4/0-4/0 ANGLE	1240-05-06	TIES PREFM SIDE SGL 4/0	3	1126-05-21
	1240-05-50	TIES PREFM SIDE 4/0 NEUTRAL	1	1126-05-21
	1119-10-02	GRD WOOD POLE W/BUTT COIL #6-4/0N	1	1126-05-21
	1163-14-20	DG TPL 2-7/16" W/ROD AND 1-3/8" GW	1	1126-05-21
	1240-05-26	TIES PREFM SIDE DBL 4/0	3	1126-05-31
	1240-05-50	TIES PREFM SIDE 4/0 NEUTRAL	1	1126-05-31
	1119-10-02	GRD WOOD POLE W/BUTT COIL #6-4/0N	1	1126-05-31
	1163-14-20	DG TPL 2-7/16" W/ROD AND 1-3/8" GW	1	1126-05-31



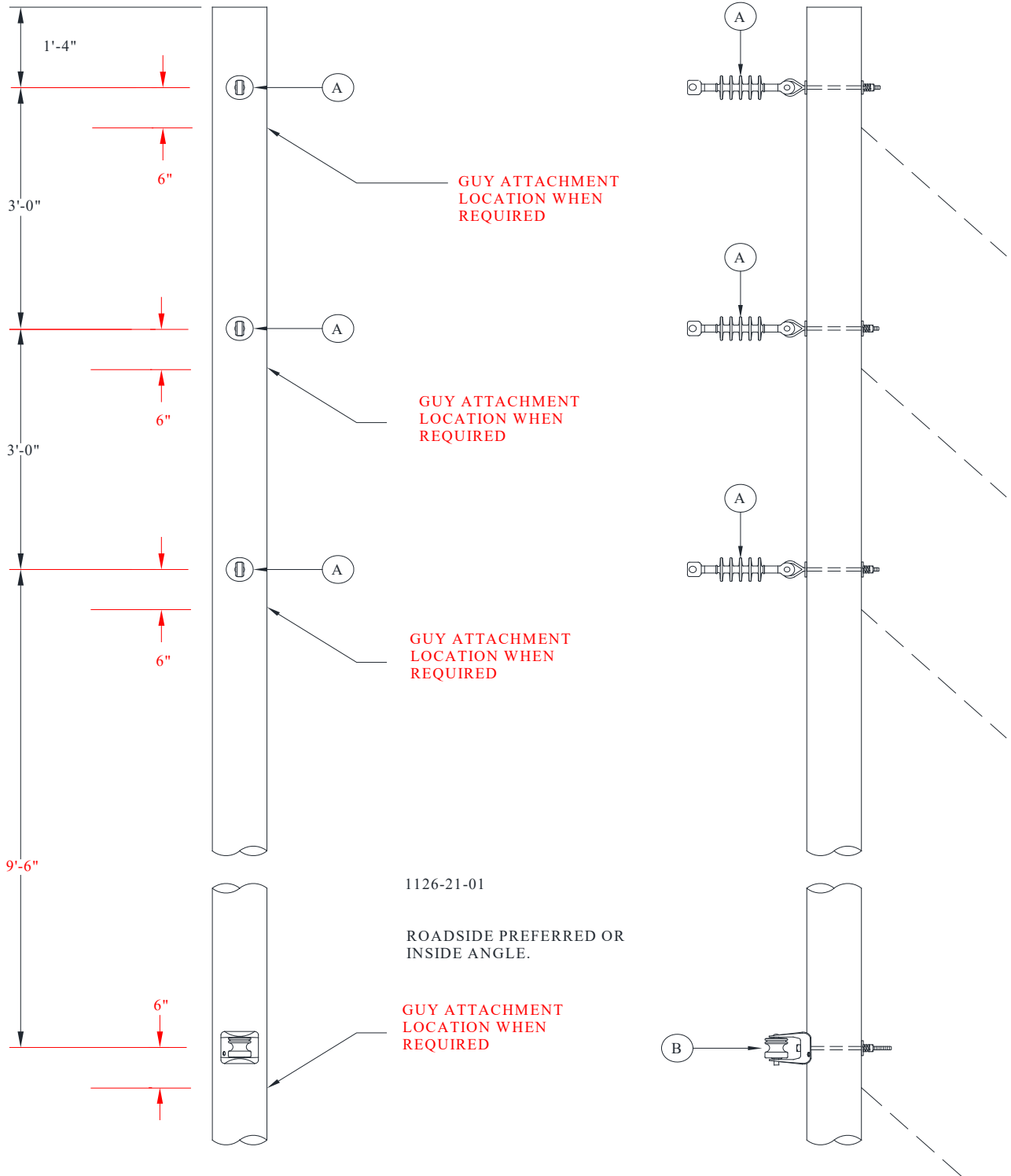
<b>1126-07</b>	<b>POLES, HARDWARE, AND FRAMING</b>	
Sheet 4 of 4	<b>3PH VERTICAL CONSTRUCTION</b>	
Rev: 08/01/20	<b>3PH VERTICAL TANGENT/ANGLE W/APPARATUS</b>	

	CU-REF	CU-DESCRIPTION	QTY	MU-REF
795-4/0 TANGENT	1240-04-10	TIES PREFM SGL 795	3	1126-05-01
	1240-05-50	TIES PREFM SIDE 4/0 NEUTRAL	1	1126-05-01
	1119-10-02	GRD WOOD POLE W/BUTT COIL #6-4/0N	1	1126-05-01
	1240-04-30	TIES PREFM DBL 795	3	1126-05-21
	1240-05-50	TIES PREFM SIDE 4/0 NEUTRAL	1	1126-05-21
	1119-10-02	GRD WOOD POLE W/BUTT COIL #6-4/0N	1	1126-05-21

	CU-REF	CU-DESCRIPTION	QTY	MU-REF
795-4/0 ANGLE	1240-05-10	TIES PREFM SIDE SGL 795	3	1126-05-11
	1240-05-50	TIES PREFM SIDE 4/0 NEUTRAL	1	1126-05-11
	1119-10-02	GRD WOOD POLE W/BUTT COIL #6-4/0N	1	1126-05-11
	1163-14-20	DG TPL 2-7/16" W/ROD AND 1-3/8" GW	1	1126-05-11
	1240-05-30	TIES PREFM SIDE DBL 795	3	1126-05-31
	1240-05-50	TIES PREFM SIDE 4/0 NEUTRAL	1	1126-05-31
	1119-10-02	GRD WOOD POLE W/BUTT COIL #6-4/0N	1	1126-05-31
	1163-14-20	DG TPL 2-7/16" W/ROD AND 1-3/8" GW	1	1126-05-31

<b>1126-21</b>
Sheet 1 of 2
Rev: 08/01/20

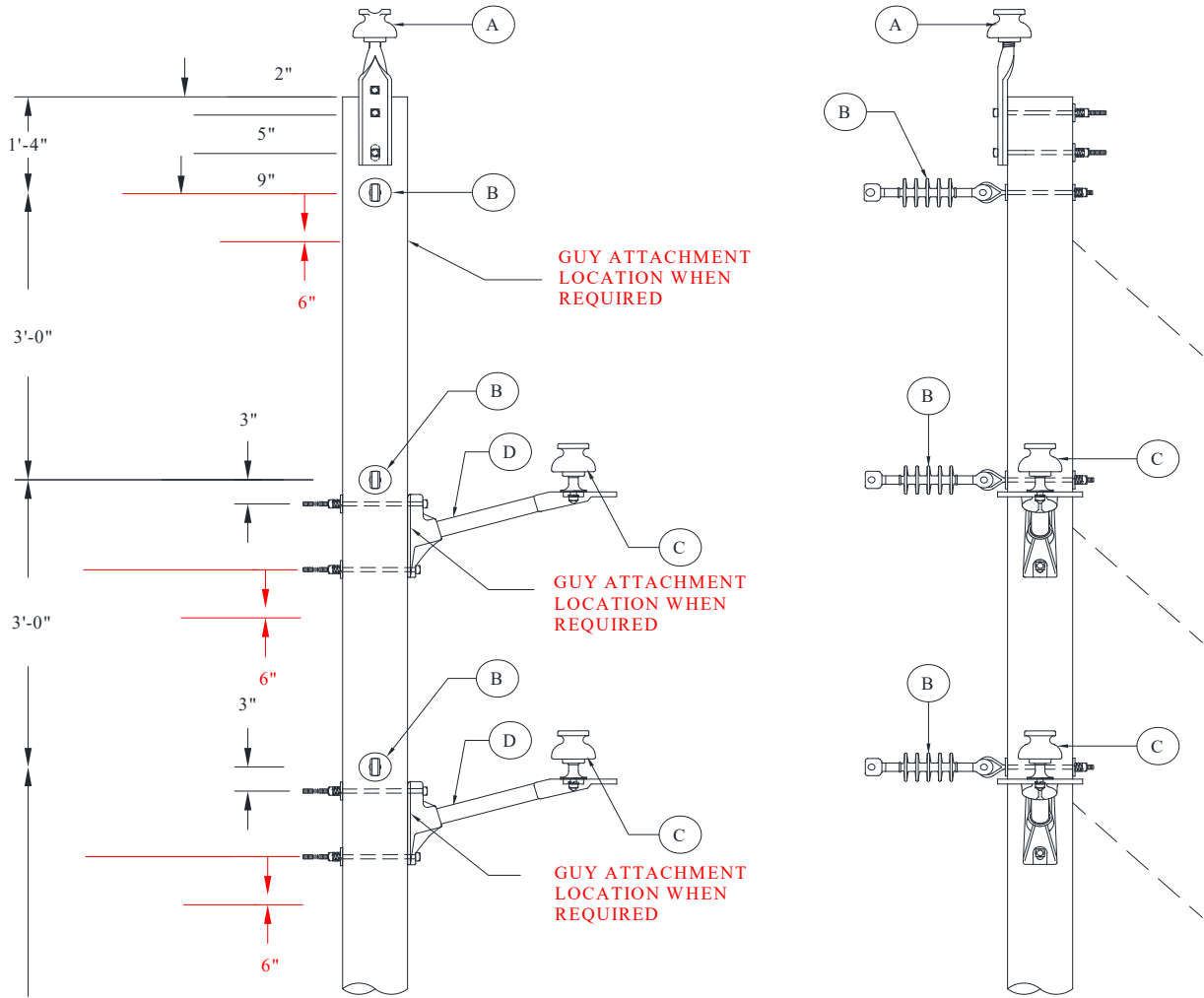
**POLES, HARDWARE, AND FRAMING**  
**3PH VERTICAL CONSTRUCTION**  
**3PH VERTICAL DEAD END**





<b>1126-42</b>
Sheet 1 of 3
Rev: 08/01/20

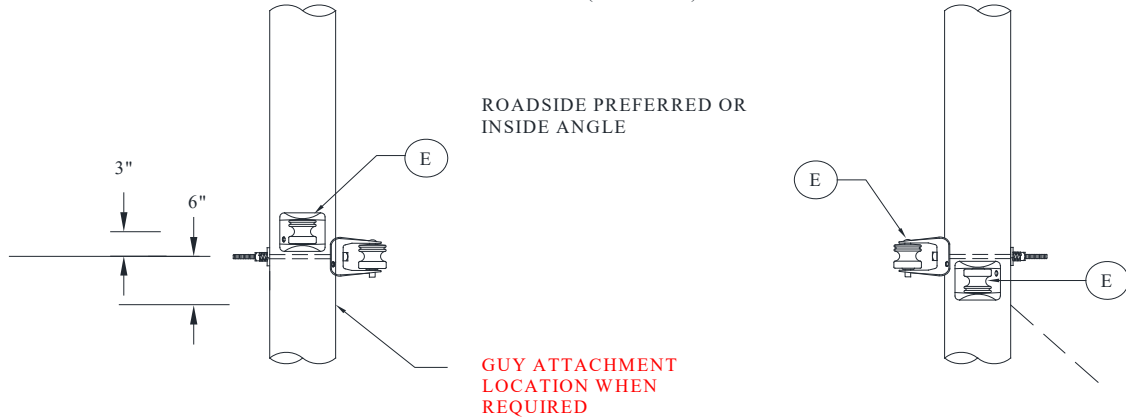
**POLES, HARDWARE, AND FRAMING**  
**3PH VERTICAL CONSTRUCTION**  
**3PH VERTICAL DE/REDUCED TENSION**




9'-6"

1126-42-01 (NEW)  
 1126-42-02 (EXISTING)

ROADSIDE PREFERRED OR  
 INSIDE ANGLE





<b>1126-42</b>	<b>POLES, HARDWARE, AND FRAMING</b> <b>3PH VERTICAL CONSTRUCTION</b> <b>3PH VERTICAL DE/REDUCED TENSION</b>	
Sheet 3 of 3		
Rev: 08/01/20		

	CU-REF	CU-DESCRIPTION	QTY	MU-REF
795-4/0	1240-01-07	DEADEND CLAMP 795	3	1126-42-01
	1240-03-40	DEAD END PREFM 4/0 AAC/ACSR	2	1126-42-01
	1240-03-70	DEADEND PREFM 795 REDUCED TEN	3	1126-42-01
	1119-10-02	GRD WOOD POLE W/BUTT COIL #6-4/0N	1	1126-42-01
	1163-16-20	DG QD 3-7/16" W/ROD AND 1-3/8" GW	1	1126-42-01
	1245-07-77	CLAMP 2-BOLT 795-795	6	1126-42-01
	1245-02-07	H-TAP CU/AL 4/0-4/0	1	1126-42-01

**ASSOCIATED MODULES**

	CU-REF	CU-DESCRIPTION	QTY	MU-REF
1/0-1/0	1240-03-11	DEAD END PREFM 1/0 ACSR	4	1126-42-02
	1245-02-04	H-TAP COMP 1/0 TO 1/0	7	1126-42-02

	CU-REF	CU-DESCRIPTION	QTY	MU-REF
4/0-4/0	1240-03-40	DEAD END PREFM 4/0 AAC/ACSR	5	1126-42-02
	1245-02-07	H-TAP CU/AL 4/0-4/0	7	1126-42-02

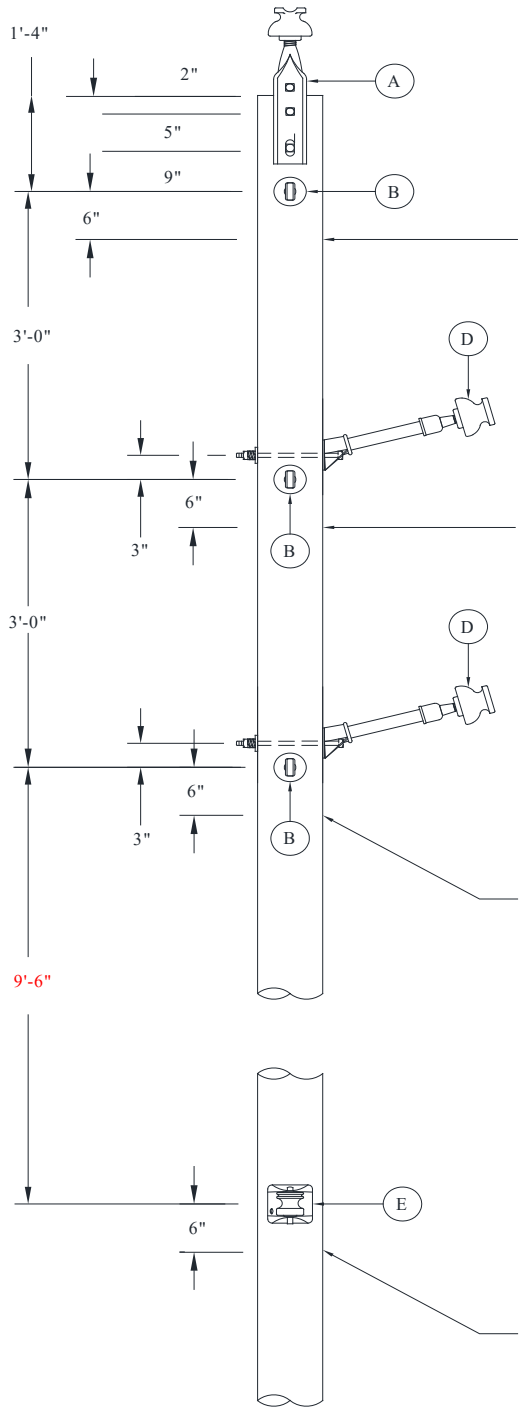
	CU-REF	CU-DESCRIPTION	QTY	MU-REF
795-4/0	1240-03-40	DEAD END PREFM 4/0 AAC/ACSR	1	1126-42-02
	1240-03-70	DEADEND PREFM 795 REDUCED TEN	3	1126-42-02
	1245-07-77	CLAMP 2-BOLT 795-795	6	1126-42-02
	1245-02-07	H-TAP CU/AL 4/0-4/0	1	1126-42-02

<b>1126-51</b>
Sheet 1 of 3
Rev: 08/01/20

**POLES, HARDWARE, AND FRAMING**

**3PH VERTICAL CONSTRUCTION**

**3PH VERTICAL DBL DE ANGLE**



GUY ATTACHMENT  
LOCATION WHEN  
REQUIRED

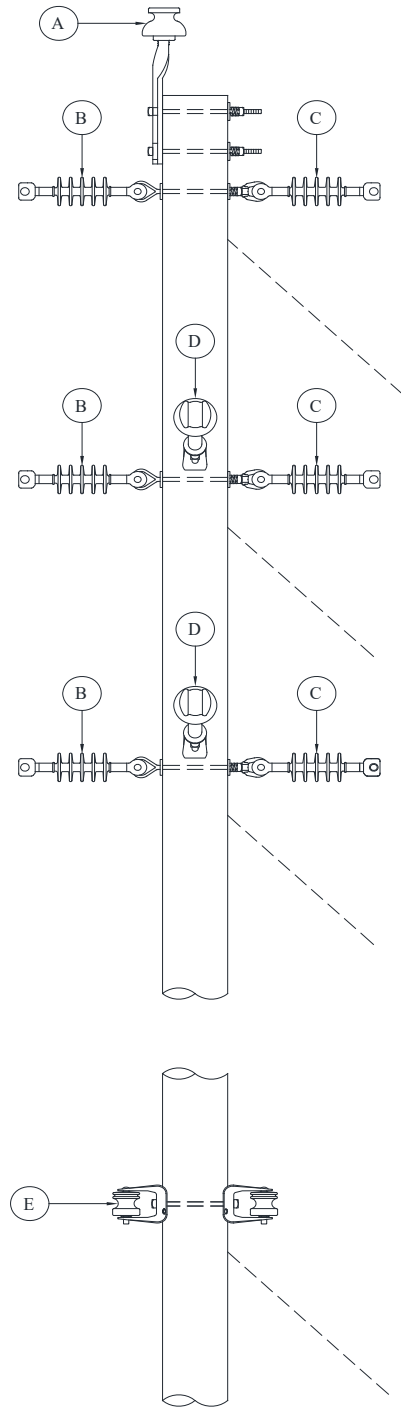
GUY ATTACHMENT  
LOCATION WHEN  
REQUIRED


1126-51-01  
1126-51-02

GUY ATTACHMENT  
LOCATION WHEN  
REQUIRED

ROADSIDE PREFERRED OR  
INSIDE ANGLE

GUY ATTACHMENT  
LOCATION WHEN  
REQUIRED



<b>1126-51</b>	<b>POLES, HARDWARE, AND FRAMING</b> <b>3PH VERTICAL CONSTRUCTION</b> <b>3PH VERTICAL DBL DE ANGLE</b>	
Sheet 2 of 3		
Rev: 08/01/20		

**MU**

**REFERENCE FOR SPAN LENGTH/ANGLE PARAMETERS**

<b>MU-ID</b>	<b>MU-REF</b>	<b>MU-DESCRIPTION</b>
--------------	---------------	-----------------------

3PHVERTDBLDE	11265101	3PH VERTICAL DBL DE
--------------	----------	---------------------

ID	CU-REF	CU-DESC	QTY	MU-REF
A	11200701	INSULATOR W/FIBERGLASS POLE TOP PIN-SGL	1	11265101
B	11201707	INSULATOR DE SGL W/3/4" EYEBOLT	3	11265101
C	11201704	INSULATOR DE SGL W/3/4" EYENUT	3	11265101
D	11200902	INSULATOR W/FIBERGLASS STANDOFF-SGL	2	11265101
E	11201009	BRKT RACK 1 POINT 14 IN-DBL	1	11265101

3PHVERTDBLDEANGLE	11265102	3PH VERT. DBL DE/ANGLE
-------------------	----------	------------------------

ID	CU-REF	CU-DESC	QTY	MU-REF
A	11200701	INSULATOR W/FIBERGLASS POLE TOP PIN-SGL	1	11265102
B	11201707	INSULATOR DE SGL W/3/4" EYEBOLT	3	11265102
C	11201704	INSULATOR DE SGL W/3/4" EYENUT	3	11265102
D	11200902	INSULATOR W/FIBERGLASS STANDOFF-SGL	2	11265102
E	11201009	BRKT RACK 1 POINT 14 IN-DBL	1	11265102

**NOTE ADD MODULE 11201003 WHEN SECOND BRACKET IS REQUIRED FOR SECONDARY SERVICE**

**ASSOCIATED MODULES**

	CU-REF	CU-DESCRIPTION	QTY	MU-REF
1/0-1/0	1240-01-01	DEAD-END CLAMP 1/0-4/0	6	1126-51-01
	1240-03-11	DEAD END PREFM 1/0 ACSR	2	1126-51-01
	1240-04-03	TIES PREFM SGL 1/0	3	1126-51-01
	1119-10-01	GRD WOOD POLE W/BUTT COIL #6-1/0N	1	1126-51-01
	1245-02-04	H-TAP CU/AL 1/0-1/0	8	1126-51-01



<b>1126-51</b>	<b>POLES, HARDWARE, AND FRAMING</b>	
Sheet 3 of 3	<b>3PH VERTICAL CONSTRUCTION</b>	
Rev: 08/01/20	<b>3PH VERTICAL DBL DE ANGLE</b>	

	<b>CU-REF</b>	<b>CU-DESCRIPTION</b>	<b>QTY</b>	<b>MU-REF</b>
4/0-4/0	1240-01-01	DEAD-END CLAMP 1/0-4/0	6	1126-51-01
	1240-03-40	DEAD END PREFM 4/0 AAC/ACSR	2	1126-51-01
	1240-04-06	TIES PREFM SGL 4/0	3	1126-51-01
	1119-10-02	GRD WOOD POLE W/BUTT COIL #6-4/0N	1	1126-51-01
	1245-02-07	H-TAP CU/AL 4/0-4/0	8	1126-51-01

	<b>CU-REF</b>	<b>CU-DESCRIPTION</b>	<b>QTY</b>	<b>MU-REF</b>
795-4/0	1240-01-07	DEAD END CLAMP 795	6	1126-51-01
	1240-03-40	DEAD END PREFM 4/0 AAC/ACSR	2	1126-51-01
	1240-04-10	TIES PREFM SGL 795	3	1126-51-01
	1119-10-02	GRD WOOD POLE W/BUTT COIL #6-4/0N	1	1126-51-01
	1245-07-77	CLAMP 2-BOLT 795-795	6	1126-51-01
	1245-02-07	H-TAP CU/AL 4/0-4/0	2	1126-51-01

	<b>CU-REF</b>	<b>CU-DESCRIPTION</b>	<b>QTY</b>	<b>MU-REF</b>
1/0-1/0	1240-01-01	DEAD-END CLAMP 1/0-4/0	6	1126-51-02
	1240-03-11	DEAD END PREFM 1/0 ACSR	2	1126-51-02
	1240-04-03	TIES PREFM SGL 1/0	3	1126-51-02
	1119-10-01	GRD WOOD POLE W/BUTT COIL #6-1/0N	1	1126-51-02
	1163-16-10	DG QD 4-3/8" GW W/ROD	1	1126-51-02
	1245-02-04	H-TAP CU/AL 1/0-1/0	8	1126-51-02

	<b>CU-REF</b>	<b>CU-DESCRIPTION</b>	<b>QTY</b>	<b>MU-REF</b>
4/0-4/0	1240-01-01	DEAD-END CLAMP 1/0-4/0	6	1126-51-02
	1240-03-40	DEAD END PREFM 4/0 AAC/ACSR	2	1126-51-02
	1240-04-06	TIES PREFM SGL 4/0	3	1126-51-02
	1119-10-02	GRD WOOD POLE W/BUTT COIL #6-4/0N	1	1126-51-02
	1163-16-10	DG QD 4-3/8" GW W/ROD	1	1126-51-02
	1245-02-07	H-TAP CU/AL 4/0-4/0	8	1126-51-02

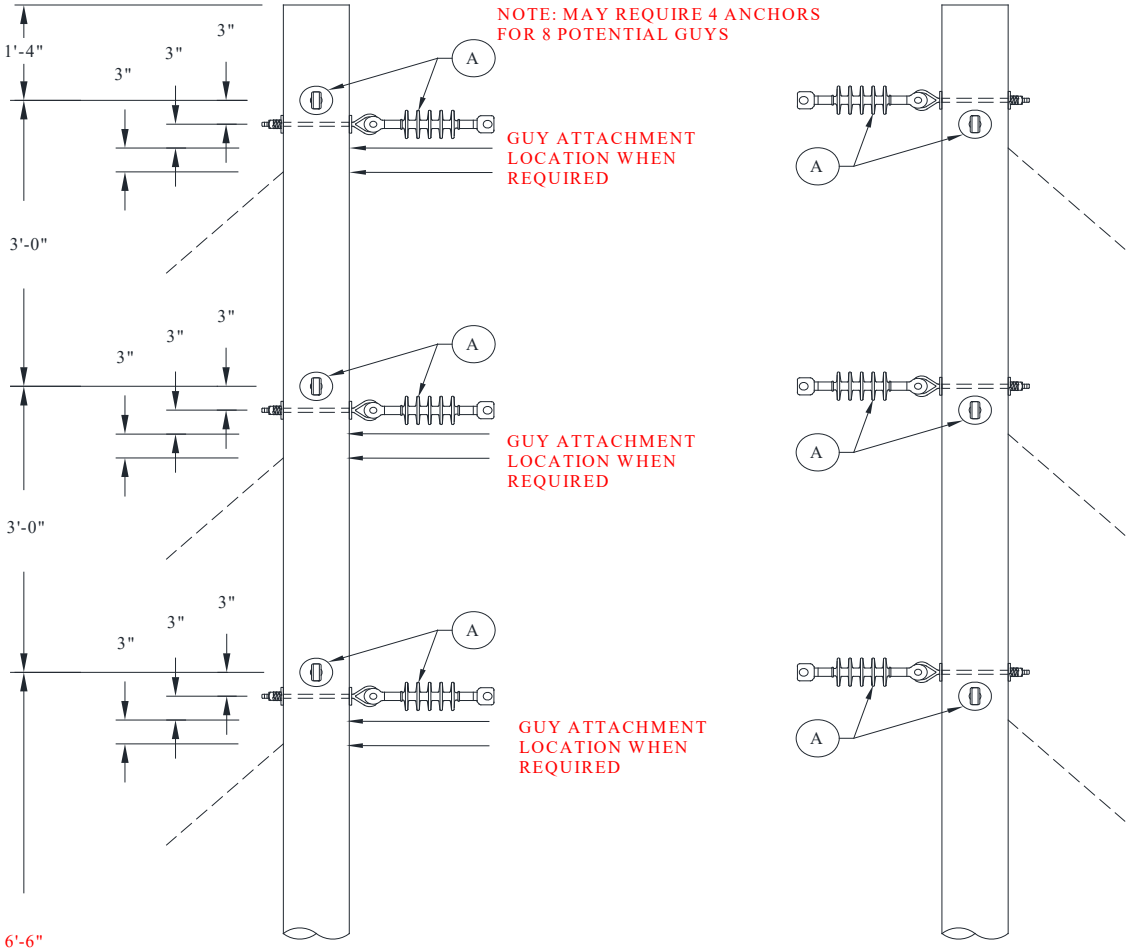
	<b>CU-REF</b>	<b>CU-DESCRIPTION</b>	<b>QTY</b>	<b>MU-REF</b>
795-4/0	1240-01-07	DEAD-END CLAMP 795	6	1126-51-02
	1240-03-40	DEAD END PREFM 4/0 AAC/ACSR	2	1126-51-02
	1240-04-10	TIES PREFM SGL 795	3	1126-51-02
	1119-10-02	GRD WOOD POLE W/BUTT COIL #6-4/0N	1	1126-51-02
	1163-16-20	DG QD 3-7/16" W/ROD AND 1-3/8" GW	1	1126-51-02
	1245-07-77	CLAMP 2-BOLT 795-795	6	1126-51-02
	1245-02-07	H-TAP CU/AL 4/0-4/0	2	1126-51-02

<b>1126-55</b>
Sheet 1 of 2
Rev: 08/01/20

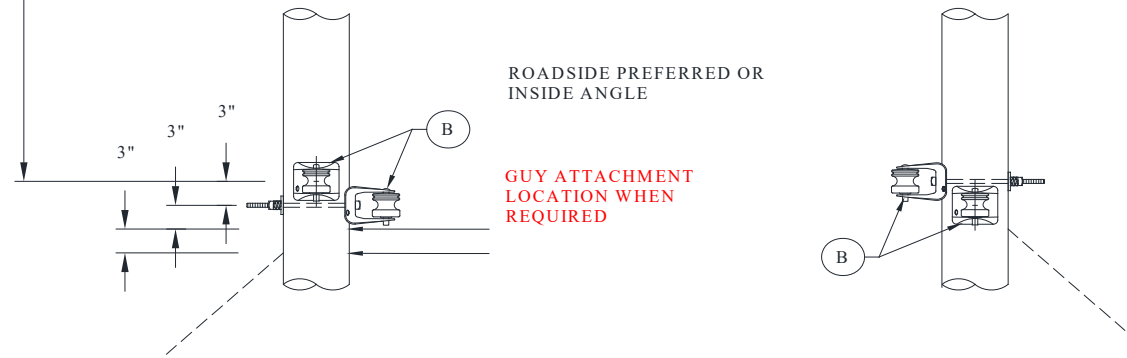
**POLES, HARDWARE, AND FRAMING**


**3PH VERTICAL CONSTRUCTION**

**3PH VERTICAL DEAD END CORNER**



1126-55-01



<b>1126-55</b>	<b>POLES, HARDWARE, AND FRAMING</b> <b>3PH VERTICAL CONSTRUCTION</b> <b>3PH VERTICAL DEAD END CORNER</b>	
Sheet 2 of 2		
Rev: 08/01/20		

**MU**

**REFERENCE FOR SPAN LENGTH/ANGLE PARAMETERS**

MU-REF	WIRE	PARAMETERS
1126-55-01	1/0	ANGLE POLE > 60 DEGREES AND < 90 DEGREES
	4/0	ANGLE POLE > 30 DEGREES AND < 90 DEGREES
	795	ANGLE POLE > 30 DEGREES AND < 90 DEGREES

<b>MU-ID</b>	<b>MU-REF</b>	<b>MU-DESCRIPTION</b>
3PHVERTDCN	11265501	3PH VERTICAL DE CORNER POLE

ID	CU-REF	CU-DESC	QTY	MU-REF
A	11201702	INSULATOR DE SGL W/5/8" EYEBOLT	6	11265501
B	11201003	BRKT RACK 1 POINT 14 IN-SGL	2	11265501

**NOTE ADD MODULE 11201003 WHEN SECOND BRACKET IS REQUIRED FOR SECONDARY SERVICE**

**ASSOCIATED MODULES**

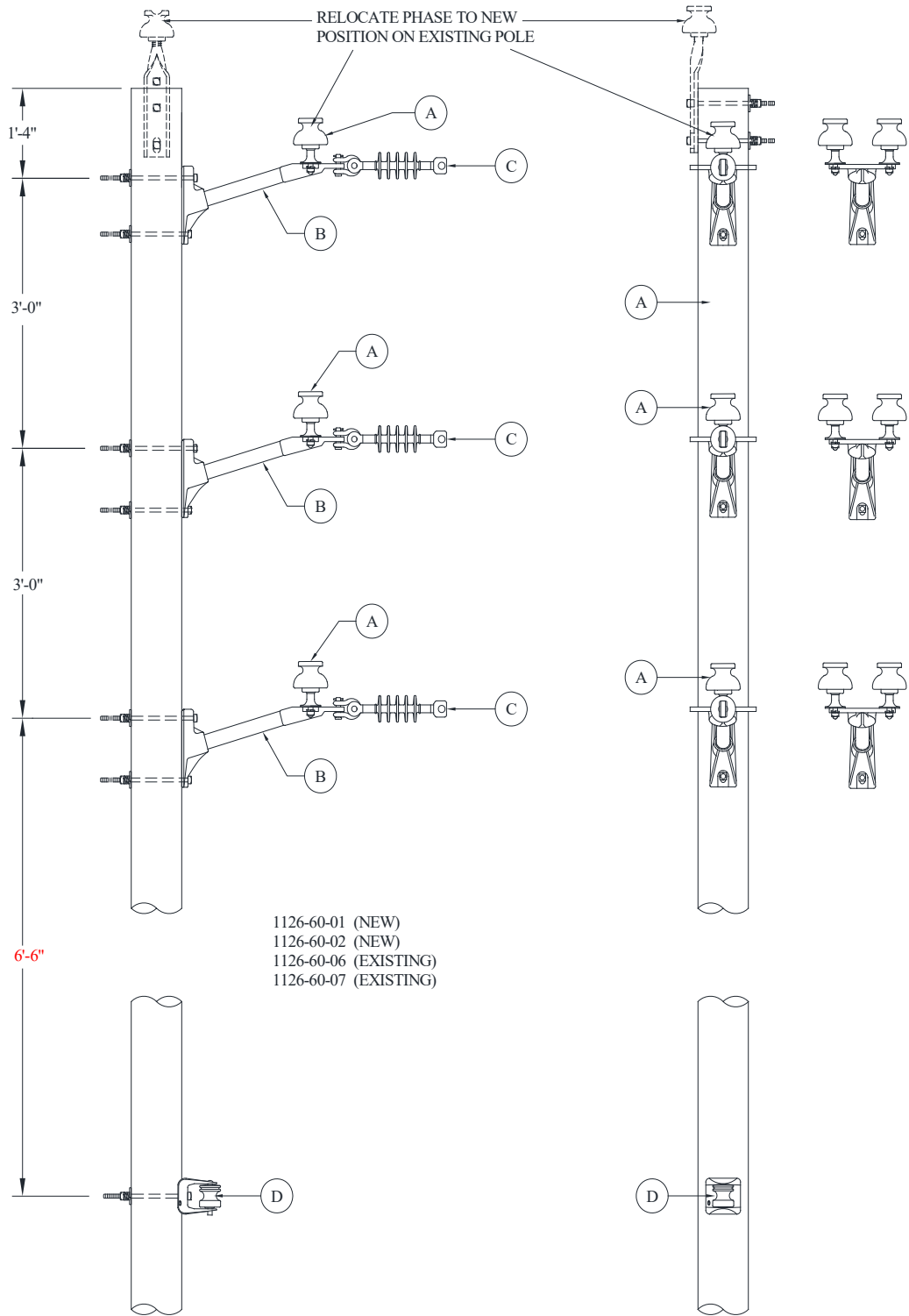
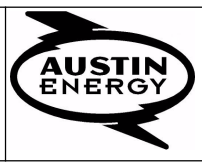
	CU-REF	CU-DESCRIPTION	QTY	MU-REF
1/0-1/0	1240-01-01	DEAD END CLAMP 1/0-4/0	6	1126-51-01
	1240-03-11	DEAD END PREFM 1/0 ACSR	2	1126-51-01
	1119-10-01	GRD WOOD POLE W/BUTT COIL #6-1/0N	1	1126-51-01
	1163-16-10	DG QD 4-3/8" GW W/ROD	2	1126-51-01
	1245-02-04	H-TAP CU/AL 1/0-1/0	8	1126-51-01

	CU-REF	CU-DESCRIPTION	QTY	MU-REF
4/0-4/0	1240-01-01	DEAD END CLAMP 1/0-4/0	6	1126-51-01
	1240-03-40	DEAD END PREFM 4/0 AAC/ACSR	2	1126-51-01
	1119-10-02	GRD WOOD POLE W/BUTT COIL #6-4/0N	1	1126-51-01
	1163-16-10	DG QD 4-3/8" GW W/ROD	2	1126-51-01
	1245-02-07	H-TAP CU/AL 4/0-4/0	8	1126-51-01


	CU-REF	CU-DESCRIPTION	QTY	MU-REF
795-4/0	1240-01-07	DEAD END CLAMP 795	6	1126-51-01
	1240-03-40	DEAD END PREFM 4/0 AAC/ACSR	2	1126-51-01
	1119-10-02	GRD WOOD POLE W/BUTT COIL #6-4/0N	1	1126-51-01
	1163-16-20	DG QD 3-7/16" W/ROD AND 1-3/8" GW	2	1126-51-01
	1245-07-77	CLAMP 2-BOLT 795-795	6	1126-51-01
	1245-02-07	H-TAP CU/AL 4/0-4/0	2	1126-51-01

<b>1126-60</b>
Sheet 1 of 6
Rev: 08/01/20

**POLES, HARDWARE, AND FRAMING**  
**3PH VERTICAL CONSTRUCTION**  
**3PH VERTICAL TANGENT W/FT-RT JUNCTION**






<b>1126-60</b>	<b>POLES, HARDWARE, AND FRAMING</b>	
Sheet 3 of 6	<b>3PH VERTICAL CONSTRUCTION</b>	
Rev: 08/01/20	<b>3PH VERTICAL TANGENT W/FT- RT JUNCTION</b>	

	CU-REF	CU-DESCRIPTION	QTY	MU-REF
1/0-1/0 ANG	1240-05-03	TIES PREFM SIDE SGL 1/0	3	1126-60-01
	1240-05-40	TIES PREFM SIDE 1/0 NEUTRAL	1	1126-60-01
	1119-10-01	GRD WOOD POLE W/BUTT COIL #6-1/0N	1	1126-60-01
	1240-01-01	DEAD-END CLAMP 1/0-4/0	3	1126-60-01
	1245-02-04	H-TAP CU/AL 1/0-1/0	7	1126-60-01
	1240-05-23	TIES PREFM SIDE DBL 1/0	3	1126-60-02
	1240-05-40	TIES PREFM SIDE 1/0 NEUTRAL	1	1126-60-02
	1119-10-01	GRD WOOD POLE W/BUTT COIL #6-1/0N	1	1126-60-02
	1240-01-01	DEAD-END CLAMP 1/0-4/0	3	1126-60-02
	1245-02-04	H-TAP CU/AL 1/0-1/0	7	1126-60-02

	CU-REF	CU-DESCRIPTION	QTY	MU-REF
4/0 -4/0 TAN	1240-04-06	TIES PREFM SGL 4/0	3	1126-60-01
	1240-05-50	TIES PREFM SIDE 4/0 NEUTRAL	1	1126-60-01
	1119-10-02	GRD WOOD POLE W/BUTT COIL #6-4/0N	1	1126-60-01
	1240-01-01	DEAD-END CLAMP 1/0-4/0	3	1126-60-01
	1245-02-07	H-TAP CU/AL 4/0-4/0	7	1126-60-01
	1240-04-26	TIES PREFM DBL 4/0	3	1126-60-02
	1240-05-50	TIES PREFM SIDE 4/0 NEUTRAL	1	1126-60-02
	1119-10-02	GRD WOOD POLE W/BUTT COIL #6-4/0N	1	1126-60-02
	1240-01-01	DEAD-END CLAMP 1/0-4/0	3	1126-60-02
	1245-02-07	H-TAP CU/AL 4/0-4/0	7	1126-60-02

	CU-REF	CU-DESCRIPTION	QTY	MU-REF
4/0-4/0 ANG	1240-05-06	TIES PREFM SIDE SGL 4/0	3	1126-60-01
	1240-05-50	TIES PREFM SIDE 4/0 NEUTRAL	1	1126-60-01
	1119-10-02	GRD WOOD POLE W/BUTT COIL #6-4/0N	1	1126-60-01
	1240-01-01	DEAD-END CLAMP 1/0-4/0	3	1126-60-01
	1245-02-07	H-TAP CU/AL 4/0-4/0	7	1126-60-01
	1240-05-26	TIES PREFM SIDE DBL 4/0	3	1126-60-02
	1240-05-50	TIES PREFM SIDE 4/0 NEUTRAL	1	1126-60-02
	1119-10-02	GRD WOOD POLE W/BUTT COIL #6-4/0N	1	1126-60-02
	1240-01-01	DEAD-END CLAMP 1/0-4/0	3	1126-60-02
	1245-02-07	H-TAP CU/AL 4/0-4/0	7	1126-60-02


<b>1126-60</b>	<b>POLES, HARDWARE, AND FRAMING</b>	
Sheet 4 of 6	<b>3PH VERTICAL CONSTRUCTION</b>	
Rev: 08/01/20	<b>3PH VERTICAL TANGENT W/FT- RT JUNCTION</b>	

	CU-REF	CU-DESCRIPTION	QTY	MU-REF
795-4/0 TAN	1240-04-10	TIES PREFM SGL 795	3	1126-60-01
	1240-05-50	TIES PREFM SIDE 4/0 NEUTRAL	1	1126-60-01
	1119-10-02	GRD WOOD POLE W/BUTT COIL #6-4/0N	1	1126-60-01
	1240-01-07	DEAD END CLAMP 795	3	1126-60-01
	1245-07-77	CLAMP 2-BOLT 795-795	6	1126-60-01
	1245-02-07	H-TAP CU/AL 4/0-4/0	1	1126-60-01
	1240-04-30	TIES PREFM DBL 795	3	1126-60-02
	1240-05-50	TIES PREFM SIDE 4/0 NEUTRAL	1	1126-60-02
	1119-10-02	GRD WOOD POLE W/BUTT COIL #6-4/0N	1	1126-60-02
	1240-01-07	DEAD END CLAMP 795	3	1126-60-02
	1245-07-77	CLAMP 2-BOLT 795-795	6	1126-60-02
	1245-02-07	H-TAP CU/AL 4/0-4/0	1	1126-60-02

	CU-REF	CU-DESCRIPTION	QTY	MU-REF
795-4/0 ANG	1240-05-10	TIES PREFM SIDE SGL 795	3	1126-60-01
	1240-05-50	TIES PREFM SIDE 4/0 NEUTRAL	1	1126-60-01
	1119-10-02	GRD WOOD POLE W/BUTT COIL #6-4/0N	1	1126-60-01
	1245-07-77	CLAMP 2-BOLT 795-795	6	1126-60-01
	1245-02-07	H-TAP CU/AL 4/0-4/0	1	1126-60-01
	1240-05-30	TIES PREFM SIDE DBL 795	3	1126-60-02
	1240-05-50	TIES PREFM SIDE 4/0 NEUTRAL	1	1126-60-02
	1119-10-02	GRD WOOD POLE W/BUTT COIL #6-4/0N	1	1126-60-02
	1245-07-77	CLAMP 2-BOLT 795-795	6	1126-60-02
	1245-02-07	H-TAP CU/AL 4/0-4/0	1	1126-60-02

**ASSOCIATED MODULES-EXISTING POLE**

	CU-REF	CU-DESCRIPTION	QTY	MU-REF
1/0-1/0 TAN	1240-04-03	TIES PREFM SGL 1/0	3	1126-60-06
	1240-01-01	DEAD-END CLAMP 1/0-4/0	3	1126-60-06
	1245-02-04	H-TAP CU/AL 1/0-1/0	7	1126-60-06
	1240-04-23	TIES PREFM DBL 1/0	3	1126-60-07
	1240-01-01	DEAD-END CLAMP 1/0-4/0	3	1126-60-07
	1245-02-04	H-TAP CU/AL 1/0-1/0	7	1126-60-07

<b>1126-60</b>	<b>POLES, HARDWARE, AND FRAMING</b>	
Sheet 5 of 6	<b>3PH VERTICAL CONSTRUCTION</b>	
Rev: 08/01/20	<b>3PH VERTICAL TANGENT W/FT- RT JUNCTION</b>	


	CU-REF	CU-DESCRIPTION	QTY	MU-REF
1/0-1/0 ANG	1240-05-03	TIES PREFM SIDE SGL 1/0	3	1126-60-06
	1240-01-01	DEAD-END CLAMP 1/0-4/0	3	1126-60-06
	1245-02-04	H-TAP CU/AL 1/0-1/0	7	1126-60-06
	1240-05-23	TIES PREFM SIDE DBL 1/0	3	1126-60-07
	1240-01-01	DEAD END CLAMP 1/0-4/0	3	1126-60-07
	1245-02-04	H-TAP CU/AL 1/0-1/0	7	1126-60-07

	CU-REF	CU-DESCRIPTION	QTY	MU-REF
4/0 -4/0 TAN	1240-04-06	TIES PREFM SINGL 4/0	3	1126-60-06
	1240-01-01	DEAD-END CLAMP 1/0-4/0	3	1126-60-06
	1245-02-07	H-TAP CU/AL 4/0-4/0	7	1126-60-06
	1240-04-26	TIES PREFM DBL 4/0	3	1126-60-07
	1240-01-01	DEAD-END CLAMP 1/0-4/0	3	1126-60-07
	1245-02-07	H-TAP CU/AL 4/0-4/0	7	1126-60-07

	CU-REF	CU-DESCRIPTION	QTY	MU-REF
4/0-4/0 ANG	1240-05-06	TIES PREFM SIDE SGL 4/0	3	1126-60-06
	1240-01-01	DEAD-END CLAMP 1/0-4/0	3	1126-60-06
	1245-02-07	H-TAP CU/AL 4/0-4/0	7	1126-60-06
	1240-05-26	TIES PREFM SIDE DBL 4/0	3	1126-60-07
	1240-01-01	DEAD-END CLAMP 1/0-4/0	3	1126-60-07
	1245-02-07	H-TAP CU/AL 4/0-4/0	7	1126-60-07

	CU-REF	CU-DESCRIPTION	QTY	MU-REF
795-4/0 TAN	1240-04-10	TIES PREFM SGL 795	3	1126-60-06
	1240-01-07	DEADEND CLAMP 795	3	1126-60-06
	1245-07-77	CLAMP 2-BOLT 795-795	6	1126-60-06
	1245-02-07	H-TAP CU/AL 4/0-4/0	1	1126-60-06
	1240-04-30	TIES PREFM DBL 795	3	1126-60-07
	1240-01-07	DEADEND CLAMP 795	3	1126-60-07
	1245-07-77	CLAMP 2-BOLT 795-795	6	1126-60-07
	1245-02-07	H-TAP CU/AL 4/0-4/0	1	1126-60-07



<b>1126-60</b>	<b>POLES, HARDWARE, AND FRAMING</b> <b>3PH VERTICAL CONSTRUCTION</b> <b>3PH VERTICAL TANGENT W/FT- RT JUNCTION</b>	
Sheet 6 of 6		
Rev: 08/01/20		

	CU-REF	CU-DESCRIPTION	QTY	MU-REF
795-4/0 ANG	1240-05-10	TIES PREFM SIDE SGL 795	3	1126-60-06
	1240-01-07	DEADEND CLAMP 795	3	1126-60-06
	1245-07-77	CLAMP 2-BOLT 795-795	6	1126-60-06
	1245-02-07	H-TAP CU/AL 4/0-4/0	1	1126-60-06
	1240-05-30	TIES PREFM SIDE DBL 795	3	1126-60-07
	1240-01-07	DEADEND CLAMP 795	3	1126-60-07
	1245-07-77	CLAMP 2-BOLT 795-795	6	1126-60-07
	1245-02-07	H-TAP CU/AL 4/0-4/0	1	1126-60-07

**ASSOCIATED MODULES-SWITCHED**

	CU-REF	CU-DESCRIPTION	QTY	MU-REF
1/0-1/0	1368-01-04	CUTOUT 15KV W/LB WITH MOUNTING BOLT	3	ALL GROUPS
	1368-05-10	JUMPER ASSY- LINE FUSE 1/0 AL PRI	3	ALL GROUPS

	CU-REF	CU-DESCRIPTION	QTY	MU-REF
4/0-1/0	1368-01-04	CUTOUT 15KV W/LB WITH MOUNTING BOLT	3	ALL GROUPS
	1368-05-11	JUMPER ASSY- LINE FUSE 4/0 AL PRI	3	ALL GROUPS

	CU-REF	CU-DESCRIPTION	QTY	MU-REF
795-1/0	1368-01-04	CUTOUT 15KV W/LB WITH MOUNTING BOLT	3	ALL GROUPS
	1368-05-13	JUMPER ASSY- LINE FUSE 795 AL PRI	3	ALL GROUPS